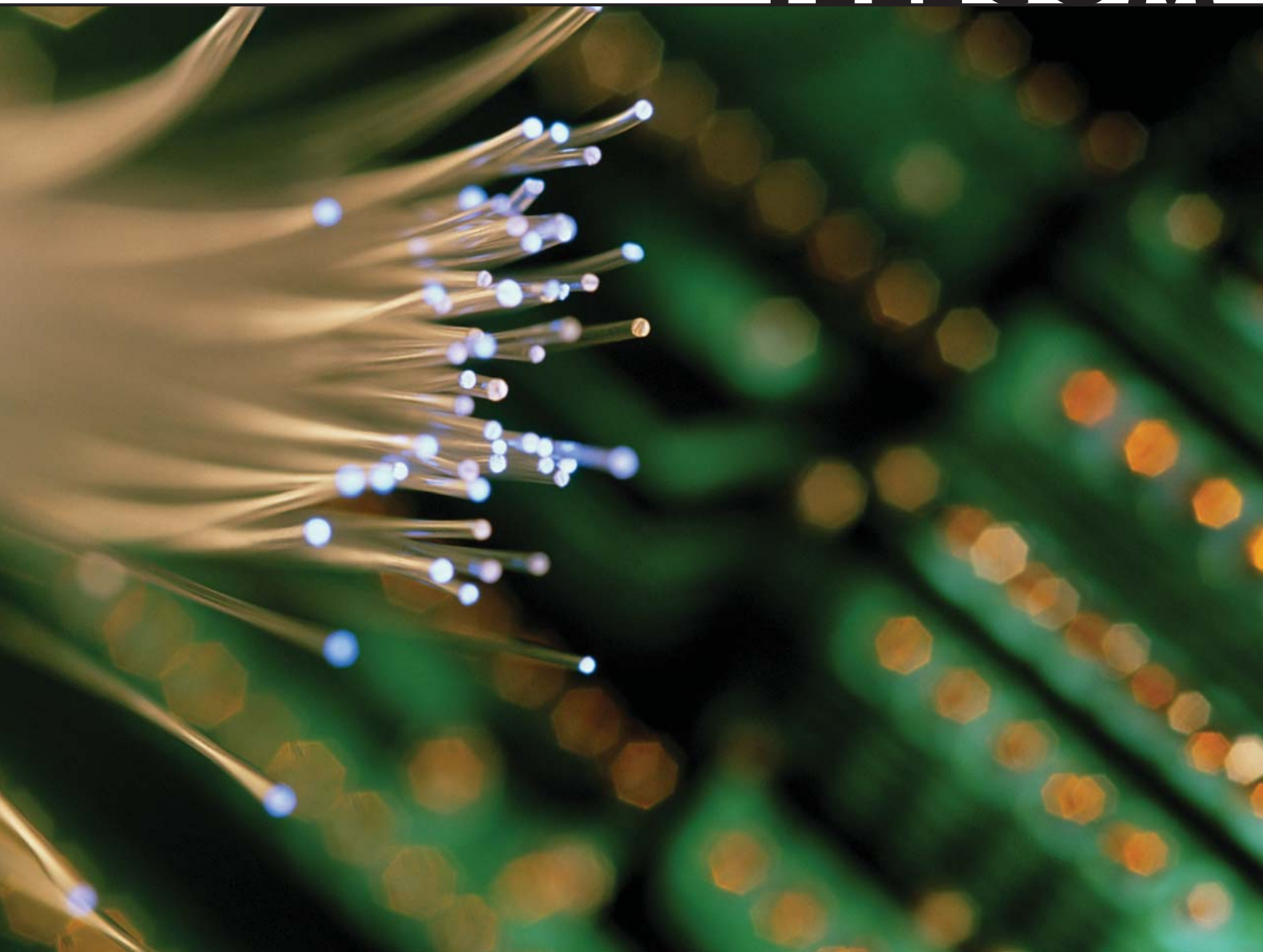


TELECOM



FOR COMPANIES THAT MUST RELY ON HIGH-SPEED TELECOMMUNICATIONS NETWORKS FOR

VOICE AND DATA TRANSMISSION, MidAmerica offers state-of-the-art solutions to meet a wide variety of

requirements. Our infrastructure ranges from fiber optic rings and two points-of-presence to DSL service and

wireless internet capability.

T E L E C O M M U N I C A T I O N S

K-PowerNet Fiber Network

MidAmerica is the converging point for four SONET protected fiber optic rings and two points-of-presence that are part of a larger network which extends to Arkansas, Missouri and beyond via affiliates. The two POPs are totally protected with a meshed-ring network design. K-PowerNet, a subsidiary of KAMO Power, owns and operates the network and has connections with both major and private carriers for competitive and reliable services that include:

- Wholesale short-haul capacity connections to long-haul carriers
- High speed internet in addition to TIER 1 internet connectivity
- DS-1 to OC-n point-to-point and ring protected private line circuits
- Ring protected backbone using SONET technology
- Presence in TIER 1 to TIER 5 markets
- Ethernet / IP services
- Co-location
- Optical wave

RECtec

RECtec, a subsidiary of Northeast Oklahoma Electric Cooperative, is the final mile provider of fiber optic circuits with an installation of a 72-count fiber optic network in the middle of the park. The network, in conjunction with the KAMO backbone, offers:

- Final mile circuits with 3 Mbps to Gigabit speeds
- Secure internet access including web hosting, email, firewall and filtering
- Data wiring including certified installers for CAT 5e, CAT 6 and fiber optic networks
- LAN Infrastructures including networks, servers, routers, firewalls, maintenance agreements, consulting
- Upgraded equipment to deliver T-1 bandwidth speeds at more economical rates

Telecommunications Providers

MidAmerica is served by two telephone companies. AT&T serves the north part of the park while FairPoint Communications serves the south part.

AT&T

MidAmerica is served by an all-digital central office with Common Channel Signaling System 7 (SS7) which is located in downtown Pryor. Communication between Pryor and Tulsa travel over an all-digital, all-fiber high capacity network. The infrastructure that

serves the park is a combination of fiber and copper supported by three remote switches strategically located in the park. Services include:

- Integrated Services Digital Network (ISDN)
- DS-3 which may require fiber to the premise
- T-1
- DSL (Option 1 & 2 speeds)
- AT&T wireless

Business customers may select from a wide array of product packages to help manage telecommunication costs.

FairPoint Communications

FairPoint delivers modern communications technology to MidAmerica with a variety of data and voice services, including:

- DSL
- Wireless broadband
- T1 point-to-point & Internet
- Carrier Ethernet
- Fiber connectivity
- Full SONET network
- Business networking

FairPoint voice services include a full suite of traditional local and long distance services, features, and business telephone systems.

Upperspace

Upperspace, another provider of high-speed wireless connectivity, can deliver speeds that range from standard 56k dialup to as high as 54 megabits.

Videoconferencing

OSU Institute of Technology MidAmerica Campus provides videoconferencing services through its advanced manufacturing training center located in the park. The center can connect through H.323 Internet Protocol (IP) or ISDN.

