

MIDPOINT

News, Views, & Comments From Oklahoma's Largest Industrial Park

Participants graduate with 36 college credits ready for "high wage positions"

OSU-Okmulgee/MidAmerica inaugurates Industrial Maintenance Technician Training Program.

Eight MidAmerica Industrial Park industry leaders met regularly during the early months of 2007 with OSU-Okmulgee / MAIP and Northeast Technology Centers to collaborate on the development of a technical training program designed to build the skills necessary for an Industrial Maintenance Technician.

"The program, which is multi-crafted, will address building skill sets in several areas," said, Scott Fry, OSU-Okmulgee / MAIP Director. "The curriculum includes instruction in a variety of technologies including motor controls, programmable logic controllers (PLC's), instrumentation, machining and mechanical technologies. This will develop a well rounded maintenance person who can respond to and rectify a variety of issues in a manufacturing facility."

"The entire course will include more than 828 hours of training and education.

Completion of the program will award a total of 36 college credits," said, Jared Girten, Business and Industry Coordinator, Northeast Technology Centers. "Additionally, all individuals who complete the technical portion of the program will be awarded a 'Certificate of Training in Industrial Maintenance Technology'."

Students can elect to use the credits gained through the training to work toward an Associate of Applied Science Degree in Engineering Technologies with an Industrial Maintenance emphasis.

"We see this as a far reaching effort," Fry said. "The immediate goal is to provide training in industrial maintenance that will be beneficial to MidAmerica employers and employees. The more long-range goal is to put in place a clear and attainable path that will lead to degrees for the participants."

continued next page

MidAmerica welcomes Digi Surveillance Systems.

Digi Surveillance Systems recently leased space in the One American Way Building at MidAmerica Industrial Park. The company designs, builds, installs and supports custom surveillance solutions for companies of all sizes located throughout Oklahoma.

"We began working with MidAmerica's General Manager Larry Williams, installing systems for the MidAmerica Airport, the park's water treatment plant, and the administrative offices," said Digi's President and Owner Josh Herron.

"We located Digi's headquarters at MidAmerica because as we continued our relationship with the park's administration,

we quickly realized the demand for company and industrial security within the park and throughout the area," continued Herron.

Digi currently employs three licensed Closed-Circuit Television (CCTV) and Access Control managers, as well as four installers. Additionally, Herron is a software engineer.

"This mix enables the company to integrate video surveillance with a manufacturer's unique process control activities, in addition to customary installation and service," continued Herron.

"Our goal is to listen to our customers and save them time and money while we satisfy their security needs," Herron concluded. "We develop a collaborative partnership with each customer so we can help them realize their individual security objectives."

www.digis.com



Instructor Craig Shaver (center) gives a hands-on demonstration for wiring a programmable logic controller (PLC). Students watching the techniques are (left to right) Corey Calico, Rudy Rice, Chris Shocklee and Newly Robertson.

OSU-Okmulgee / MidAmerica continued from front page

“The maintenance occupation is one that is common among almost all industries within the park,” said MidAmerica Administrator Sanders Mitchell. “It is also one that our plant managers, throughout the park, report they have a difficult time filling with qualified personnel.”

“The growth we are witnessing, the expansion of existing park industries as well as the new companies moving into the park is only increasing the need for well trained industrial maintenance employees,” continued Mitchell. “We are grateful for this collaborative initiative among our educational facilities and current industries. They are working to enhance our workforce today, and also guaranteeing a highly-qualified workforce for the future.”

“This program will help fill that need and will also provide the opportunity to

individuals who are looking for high wage positions,” Mitchell concluded.

The Industrial Maintenance Technician Program will be offered using existing educational programs at OSU-Okmulgee/MAIP and some recently-created courses which will be delivered at Northeast Technology Center. The program will also utilize several delivery formats including traditional, on-line and hybrid.

Class schedules will be flexible in order to meet the needs of working adults, primarily those employed by MidAmerica industries. Additionally, students will have the opportunity to prove mastery of the skills within each class and receive credit for previous experience and knowledge.

www.osu-okmulgee.edu/maip/

“The growth we are witnessing, the expansion of existing park industries as well as the new companies moving into the park is only increasing the need for well trained industrial maintenance employees,” continued Mitchell.

Continuing upgrades keep American Castings as state-of-the-art foundry.

The American Castings facility sits on 91 acres and occupies 400,000 sq. ft. of manufacturing space. It is one of the most modern foundries in the United States.

The original plant, which opened in 1974, operated for two years as Gardner Denver. In 1976, Case purchased the operation and ran it for twenty years – until 1996. At that time Grede Corporation purchased the facility and operated it as Grede/Pryor Foundry.



This new “Barrel Horse” was added to boost the quality of the firm’s green sand mold process.

American Cast Iron Pipe Company (ACIPCO), a company founded by John Joseph Eagan in 1905, purchased the plant in September 2003 and established it as American Castings, LLC.

Explaining the purchase, American Castings Plant Manager Mike Fuller said, “ACIPCO management was well aware of the history of the foundry at MidAmerica Industrial Park. They were aware that the

plant was one of the most modern foundries in the U.S. because both Case and Grede had continually updated the facility with absolute state-of-the-art equipment. Also, they were familiar with the potential workforce available to MidAmerica employers.”

Today, American Castings specializes in producing ductile iron castings for a variety of industrial and commercial applications such as waterworks and the capital goods and energy industries, which includes construction, agriculture, oil field, power transmission, and fork lift (material handling).

Addressing American Castings continuing effort to upgrade the plant, Director of Manufacturing Jack Smith said, “One of the areas we have placed a great deal of upgrade resources on is the finish room, which is one of the toughest jobs in the foundry industry. We have invested substantially in robotics to help increase the output of our people, and increase overall production capacity.”

“There have been several other upgrades made this past year,” continued Smith. “We installed a new sand cooling system in the nobake foundry. Also, the sand handling equipment was upgraded to handle 50 tons of sand per hour versus 30 tons of sand per hour.”

“A new ‘Barrel Horse’ shakeout and sorting conveyor was installed on the green sand line to help improve sand properties as well as reduce shakeout related defects to



American Castings continues the legacy of reinvesting in equipment that will increase productivity and cut waste.

the castings,” Smith added. “Currently a new nobake core-making loop is being installed in the core room with the intention to make large cores more efficiently.”

“Much of our upgrade dollars are invested not only to increase the output, but also to ease the load on our employees,” said Mike Fuller. “Our basic corporate philosophy begins with ‘people are our greatest asset.’ ACIPCO has been a pioneer in developing human relations within industry since its beginning and that remains at the very forefront in many of our upgrade decisions.”

www.americancastings.com

OSU-Okmulgee / MAIP taking classroom offerings to the web.

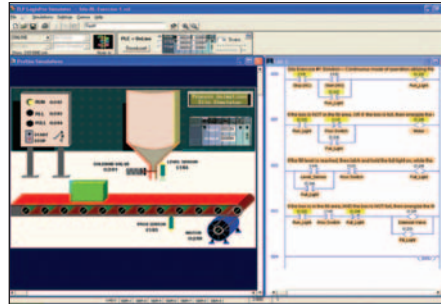
OSU-Okmulgee at MidAmerica Industrial Park directs its entire educational program to working adults, primarily those employed by industries within the park. In that spirit the school is now taking its classes online. The curriculum will be delivered utilizing the school's internet classroom called Desire 2 Learn, or simply D2L.

The initial online offering, a class in Programmable Logic Controllers (PLC's), will be conducted for new Gatorade maintenance personnel.

The course will begin with a face-to-face class meeting, which will introduce the students and instructor, and set program expectations. Additionally, the occasion will provide a setting for the students to become familiar with their new classroom setting – the internet.

"Online learning has experienced significant growth during the past few years. It is particularly appealing for working adults who require convenience and flexibility," said Scott Fry, OSU-Okmulgee/MAIP Director. "However, the method has not been as readily available in technical education because most

technical classes require 'hands-on' elements not afforded on-line. But, because we are now in a time when life-long learning is a requirement, it is imperative that we find ways to make this work. We must provide those who do not have the luxury of time access to educational opportunities."



This image of an online lesson displays a "process scenario" and the PLC program that is employed to control it. The lesson enables students to experience an illustration of their program at work. This is one of 15 lessons that students will take over a 15 week period.

Students who enroll in the PCL class will have access to the resources on the D2L website. Additionally, they will be able to utilize the required PLC software and simulation software away from the classroom,

on home or work computers.

"Students will be able to complete weekly assignments on their own time and then email them to the instructor for grading," continued Fry. "They will also have access to the instructor and other students, through the D2L discussion board."

Occasionally, the class will have scheduled class meetings and performance exams, which must be completed at the school's facility. This will serve to prove mastery of the skills.

"We are very excited about this new venture and are confident it will be a success. The D2L program will allow us to reach out to more MidAmerica employers and employees and make attaining an education more convenient," Fry concluded. "We have always felt the tricky part of on-line technical education was to ensure students grasped the application skills. Today, we feel we can, in fact, validate that learning. Additionally, we are just down the road from work for all MidAmerica Industrial Park employees, so if a student needs a face-to-face meeting, we will be here for them."

www.osu-okmulgee.edu/maip/

GRDA gears up for new Transmission Building.

Though all the plans are not finalized yet, the Grand River Dam Authority is gearing up for the construction of a new Engineering and Transmission Headquarters. The GRDA Board of Directors approved moving the process forward at its September meeting.



Artist's rendering of GRDA's new Engineering & Transmission Headquarters.

GRDA's current Engineering and Transmission Headquarters building is located on Highway 69A, adjacent to the MidAmerica Industrial Park. Preliminary plans are for the new structure to be built on the same site, just east of the current facility.

"Right now, our engineering and transmission functions are all located together, near the bulk of GRDA industrial customers in MidAmerica Industrial Park," said GRDA Corporate Communications Director Justin Alberty. "That will not change. All functions will remain there, and the new structure will even allow us to bring in some other functions from other locations."

"Specifically, the preliminary plan is to relocate GRDA's Environmental and Safety departments, currently housed on-site at the Coal Fired Complex, to the new structure," continued Alberty. "The current Environmental and Safety building is also the centralized training location for all the ongoing training for our 500 employees, this new facility will contain a new training room, new office space, and really, just address a real need we have for adequate space for some very critical GRDA functions."

The present structure is approximately 9,800 square feet. The new structure,



The existing Engineering & Transmission campus was built over 30 years ago.

which will be paid out of bond funds, will be just over 19,000 square feet.

Currently, GRDA is utilizing temporary trailers to house some members of its engineering department. Once the new building is completed, the present building, which was constructed in the 1970s – without insulation in the walls – will be torn down.

Alberty added that the GRDA Transmission structure, which pre-dated the current structure, was actually located in Pryor. "Today it is the Pryor police station," he said.

www.grda.com

Berry Plastics & Covalence Specialty Materials merge; name Rod Merrill as Plant Manager.

Berry Plastics Group, Inc. and Covalence Specialty Materials Holding Corp. recently completed their stock-for-stock merger.

Berry Plastics is a leading manufacturer and marketer of plastic packaging products, including open top and closed top packaging, polyethylene-based plastic films, industrial tapes, medical specialties, packaging, heat-shrinkable coatings and specialty laminates. The products are shipped to more than 17,000 customers, which range from large multinational corporations to small local businesses.

"We welcome the merger with Covalence, which will bring additional customers, products and skilled personnel to our company," said Ira Boots.



Rod Merrill, new Plant Manager of the Berry facility at MidAmerica.

Ira Boots serves as the Chairman and Chief Executive Officer, and Brent Beeler the Chief Operating Officer, of the combined company. Kip Smith, the former Chief Executive Officer of Covalence, continues to run the Covalence businesses.

The increased scale of the combined company makes Berry one of the largest plastic packaging companies in the world, which will benefit from enhanced diversity

of end-markets, customers and products.

"We welcome the merger with Covalence, which will bring additional customers, products and skilled personnel to our company," said Ira Boots. "Our focus will be placed on servicing our customers by utilizing all available assets, including the strength derived from the combined ownership."

Rod Merrill was named Plant Manager for the MidAmerica facility, which manufactures polyethylene films for the packaging industry.

"We are grateful for the added benefits and scale that are available to us as a result of the combined ownership," said Merrill. "We continue to serve our customers needs for shrink and over-wrap film. Our focus is to provide quality converter film, custom bags, and other polyethylene products for the food, beverage, publishing, industrial, and building products markets."

www.berryplastics.com



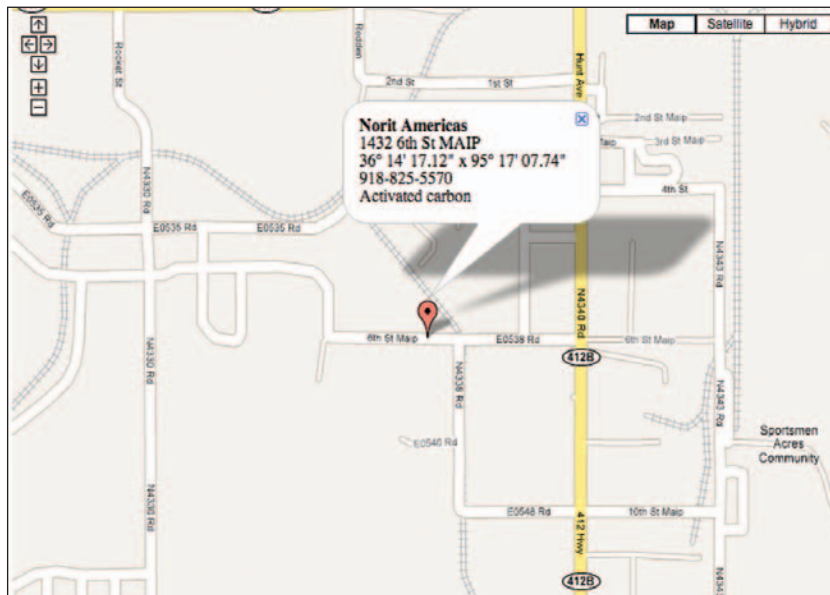
On-line map points the way to all points of MidAmerica.

Over the last few months, several members of the MidAmerica staff have been perfecting a special on-line map to help visitors find park industries fast.

"Nearly every day, someone calls the MidAmerica office to ask for directions to a specific company at the park," said MidAmerica Marketing Director Don Berger. "Our new on-line map will make it easy to find any company or any other landmark at MidAmerica."

The map is based on "Google Maps JavaScript API" programming. The program allows users to access a directory of industries and pinpoint the location of any company on a web map.

"It's point-and-click convenience. To



Going your way: Using a web-based map, viewers now have the ability to find any location at MidAmerica with a quick click of their computer mouse.

create this on-line map, we worked with MESTA (Mayes Emergency Service Trust Authority) to locate every industry with GPS (Global Positioning System) coordinates," Berger said.

Users can click on an industry name in the directory and have the location highlighted on a road map of MidAmerica in seconds. Details include company name, formal address, business description, phone number and GPS coordinates.

"GPS coordinates are becoming mainstream tools in the logistics business. Most of the leading commercial trucking companies now have tracking devices for GPS coordinates. You just type in the coordinates and the computer plots

directions to the destination. It is just a lot more efficient than referring to a road atlas constantly," Berger said.

To view the map, visit: www.maip.com/industrymap.htm

FOCUS POINT

**Company Name:**

DTS Communications, Inc.

Corporate Ownership:

The corporation is held by James Cavin & Brian Ledbetter.

MidAmerica Location:

4059 Redden Street, Ste. B



One of the Cisco Access Points (AP) used to generate a wireless signal. At right, a battery backup that can be used with the AP to generate up to 40 hours of power if there was a power outage.

What They Do:

DTS is a Cisco Certified Partner that engineers Wi-Fi networks using Cisco products. The company is one of only 38 U.S. businesses that is "CISCO Outdoor Wireless Mesh" certified. Every DTS technician is CISCO Certified: Networking Associate (CCNA); Design Associate (CCDA); and, Networking Professional (CCNP).

Within the Wi-Fi networks DTS installs and supports, the company also provides equipment for internet usage, emergency management capabilities, and automated meter readings. DTS also specializes in industrial Radio Frequency Identification (RFID) technologies.

Employee Base:

6 full-time employees

History:

DTS Communications opened in April 2006. The company began as engineers of wireless networks and resellers of Cisco



Map displays the proposed coverage area for DTS wireless network in Pryor.

Systems' products. DTS has grown to include the launch of sister company DTS Wireless, a Wi-Fi Internet service provider. The company has also researched and developed a solar power battery backup system that is specific to wireless networks.



James Cavin (left) and Brian Ledbetter (right) install a rooftop mesh access point for the Pryor network. Access points like these are used to send out the wireless signals from the network that DTS is creating.

Customer Base:

Most of the DTS customer base is located in Oklahoma, Texas and Arkansas. The customers are primarily municipalities, universities, and health care facilities.

DTS is currently in negotiations with Oklahoma cities, including Pryor, who are

interested in installing city-wide Wi-Fi networks.



A DTS Access Point stationed at the Country Fever grounds delivers wireless internet for the festival staff and attendees.

In addition to the city-wide networks, municipal customers include: Muskogee, Oklahoma, Springdale, Arkansas, and El Paso, Texas. Also, numbered among DTS non-municipal customers are: Oklahoma State University, Texas State University, Sparks Medical Facility and the Cherokee Nation.

Services:

DTS works closely with customers to understand their needs and assist them in designing a network that best suits their specific needs. Follow-up support is continued after the job is complete to ensure continued satisfaction with the installed networks.



Field Engineer Chris Leatherwood configures the wireless network for Pryor. Cisco switches are used to connect the DTS network into the city's high-speed fiber optic cable.

Facilities:

A warehouse and lab is located at MidAmerica Industrial Park.

Company Philosophy:

DTS Communications and DTS Wireless strive to provide state-of-the-art technologies and the highest quality products and services to our customers.

www.netdts.com

POINT OF VIEW: A COMMENTARY FROM JARI ASKINS

Oklahoma has achieved so much in the past 100 years and together we can proudly reflect on our past, build on our present and look to the future. We are a people with a strong work ethic that has made a positive impact on our communities. One of the finest examples of this of work ethic and community spirit is found in Pryor.

Over our first century, Oklahoma has become an accomplished state with many success stories. One such example of our success is Pryor's MidAmerica Industrial Park. It is a testament to the enduring qualities that has made Oklahoma great.

"Our great state has achieved so much in the past 100 years, but I have a deep belief that Oklahoma's best days are still ahead."

Not only is MidAmerica the largest industrial park in Oklahoma, it is also the largest rural industrial park in America. Since its inception in 1960, MidAmerica has evolved into one of the leading centers for manufacturing, processing and



Jari Askins

distribution in the United States. The 9,000 acre park is home to small firms with few employees to major divisions of Fortune 500 companies that employ hundreds.

MidAmerica continues to be recognized by leading economic development publications as a top-ranked expansion and relocation site for growing companies. With an enviable position near "America's Crossroads" (I-35, I-40 and I-44) and adjacent to North American Rail Link, the possibilities for future expansion appear limitless.

The people of Pryor and Mayes County are courageous people who dare to dream big. Our state and nation have been touched

by your remarkable determination, compassion and accomplishments.

Oklahoma is a proud state with a rich heritage. We are a dynamic, culturally diverse state full of hard-working, friendly people. It's a wonderful place to live and raise a family and a great destination for first-time visitors.

Our great state has achieved so much in the past 100 years, but I have a deep belief that Oklahoma's best days are still ahead. Our state is on the rise and the economy is booming. Oklahoma's business climate is among the best in the nation. There is still much to accomplish, however. We have an exciting future with many new successes ahead.

Oklahoma's favorite son, Will Rogers, once said, "Oklahoma is the heart, it's the vital organ, of our national existence." I agree. What better year for Oklahoma to celebrate this sentiment than during our Centennial Celebration?

I am honored to represent my fellow citizens both in-state and across America during this historic time. As we commemorate the Centennial, let us reflect on our glorious heritage. Let us look to the future with excitement and anticipation for all that Oklahoma will be for future generations.

Jari Askins is Lt. Governor for the State of Oklahoma.

ACCRA cites Pryor in "Top Ten."

In its Second Quarter 2007 Cost of Living Index (COLI), ACCRA placed Pryor Creek, Oklahoma in the Top Ten Least Expensive Urban Areas.

Among the 290 urban areas participating in the national survey, the after-tax cost for a professional/managerial standard of living ranged from more than twice the national average in New York (Manhattan), NY to nearly 16 percent below the national average in Pryor Creek, OK.

The ACCRA Cost of Living Index is recognized as a reliable source of city-to-city comparisons by diverse groups such as the U.S. Census Bureau, U.S. Bureau of Labor Statistics, CNN Money, and the President's Council of Economic Advisors.

The composite index is based on six components – housing, utilities, grocery items, transportation, health care and miscellaneous goods and services.

The COLI measures regional differences in the cost of consumer goods and services,

excluding taxes and non-consumer expenditures, for professional and managerial households in the top income quintile. The data is based on more than 50,000 prices covering almost 60 different items for which prices are collected quarterly by chambers of commerce, economic development organizations or university applied economic centers in each participating urban area.

America's Least Expensive Urban Areas*		
Ranking	Urban Areas	COL Index
1	Joplin MO	80.0
2	Lancaster SC	81.9
3	Harlingen TX	83.6
4	Cookeville TN	83.8
5	McAllen TX	83.8
6	Douglas GA	84.0
7	Pryor Creek OK	84.2

* An excerpt from the ACCRA Cost of Living Index (COLI) for the Second Quarter 2007; National Average for 290 Urban Areas = 100

GRDA CEO addresses Pryor Chamber.

Discussing new construction in the Pryor area was one of the goals of Grand River Dam Authority Chief Executive Officer Kevin Easley when he spoke to the Pryor Area Chamber of Commerce (PACC) lunch forum in early October.

Easley, who has led GRDA since March 2004, told the forum's capacity crowd about upcoming construction projects his organization is planning. Most notably, for the MidAmerica Industrial Park and Pryor area, is the construction of a new Engineering and Transmission Headquarters facility, which would be built adjacent to MidAmerica Industrial Park at GRDA's current Engineering and Transmission site.

"We feel GRDA is a progressive agency and moving forward on important projects like this helps prepare us to meet long term goals," said Easley. "This new facility will solve some real space issues we have, as well as consolidate several departments under one roof."

Easley also told the crowd of GRDA's plans to remodel its Energy Control Center (atop Robert S. Kerr Dam) in an effort to meet new requirements set forth by the North American Electric Reliability Corporation (NERC).



CEO Kevin Easley shares some good news about GRDA's capital improvements plans with members of the Pryor Chamber.

"We are investing a lot of money into this project, not only to meet these NERC requirements, but to insure that GRDA can always be a reliable source of electricity and economic development partner to our customers, particularly those at MidAmerica Industrial Park," said Easley. "We feel what's good for our organization is good for our customers."

"Each of these projects," said Easley, "will be financed with bond issue funds, paid out over 30 years, and will not impact customer rates."

During his presentation, he also complimented the Pryor Municipal Utility Board, including General Manager Gary Pruett, for its efforts following the January ice storm and continued commitment to reliable, low-cost rates for the businesses and individuals of Pryor.

"Public power utilities like GRDA and Pryor MUB are in business for one reason: to meet customer needs," said Easley, "and all revenues from the sale of electricity are driven back into the community where they can do the most good."

Easley also told the crowd about the partnership between GRDA and MidAmerica Industrial Park. "We work very closely with Sanders Mitchell and his staff to recruit industry to the park," said Easley. "MidAmerica and GRDA share common economic development goals and I feel that the new projects GRDA has in the works will only serve to reinforce our commitment to those goals."

www.grda.com



A powerful idea catches wind at Gatorade.

On September 21, a construction crew from Harvest Energy of Tulsa installed a wind generator in front of the offices at the Gatorade plant at MidAmerica. The generator, fabricated by Fortis Windenergy, was designed to produce a maximum of 5.8 kilowatts of electricity that will be blended into the general power service grid for the plant. More wind generators could be in the future at Gatorade if this initial example performs to expectations.

Tony Jack Lyons: 1924-2007.

On July 14, we lost a good friend. Tony Jack Lyons will forever be remembered as a major community leader involved in making our community a better place.

Former All-State football player. B-24 bomber pilot in World War II. Lawyer. Judge. GRDA Board Member. Founding member of St. Martin of Tours Episcopal Church. Pryor Citizen of the Year. Lions Club. Charter member of the Elks Lodge. Just a few of his accomplishments.

Yet at MidAmerica, he has earned a special place in our memories. Mr. Lyons was here at the beginning of MidAmerica.

He was a Founding Member of the MidAmerica Board and served the Board notably for many years. Due to his wise counsel, the park continues to benefit from his role in building MidAmerica to what it has become today. His decisions are a part of the reason for the success we enjoy today.

"He has left a long and lasting imprint on our area. We wish to share our



Mr. Lyons joined the festivities at MidAmerica for the Gatorade groundbreaking in June, 2006.

condolences with his family and to share our appreciation for his proud legacy," said MidAmerica Administrator Sanders Mitchell.

Mr. Lyons will be missed...by all.

Special thanks to Sommer Woodward & Amy Johns of the Pryor Daily Times.

Orchids names new President & CEO

Orchids Paper Products Company Board of Directors recently announced the appointment of Robert A. Snyder as the company's President and CEO. Mr. Snyder succeeds Michael Sage, who has retired from the company.

Snyder has a career in the paper industry that has come full circle. After graduating with a BS degree in Paper Science and Engineering from the State University of New York at Syracuse University, he began his career as an engineer with Kimberly-Clark's tissue mill in Niagara Falls, New York. Later, he was involved in the newsprint and coated paper ends of the business.

Most recently Snyder served as general manager of KTG USA, a subsidiary of Kruger Inc. Before joining KTG USA, Snyder served in various capacities with



Orchids new President / CEO Snyder has held management positions at other leading paper goods manufacturers.

Kruger, Great Northern Paper Inc., Alliance Forest Products, U.S. Corp. and Bear Island Paper Co.

Orchids Chairman of the Board Jay Shuster said, "We are excited that Bob has

joined our team. His extensive pulp and paper experience and proven leadership abilities will be invaluable as we continue to grow our business."

Mr. Snyder has two grown children: a daughter in Atlanta, Georgia and a son whose life and work take him between Charleston, South Carolina and New York City. He and his wife are excited about moving to the Pryor area.

Orchids is an integrated manufacturer of tissue paper products serving the private label consumer market. From its operations at MidAmerica, it utilizes recycled waste paper to produce a full line of finished tissue products that includes paper towels, bathroom tissue and paper napkins which it distributes to retail chains in the central United States.

www.orchidspaper.com

MidAmerica INDUSTRIAL PARK

P.O. Box 945

Pryor Creek OK 74362-0945

(918) 825-3500

MidPoint is a publication of MidAmerica Industrial Park, a 9,000-acre manufacturing, processing, and distribution center located in Pryor Creek, Oklahoma. Founded in 1960, the park has a 365-acre airport with a 5,000-foot runway, and its own water and wastewater treatment plants. The nation's largest rural industrial park, MidAmerica is owned and operated by a self-sustaining public trust established to enhance economic development efforts in Northeast Oklahoma. Also regarded as the largest industrial park in Oklahoma, MidAmerica does not rely upon the support of state or federal tax monies. Over 70 firms are located within the park including several Global and Fortune 500 companies.

Please address all comments and park news to:

MIDPOINT EDITOR

MidAmerica Industrial Park
P.O. Box 945
Pryor Creek OK 74362-0945
(918) 825-3500
FAX (918) 825-4022
donb@maip.com

TRUSTEES

R. Dobie Langenkamp
David Chernicky
Sanders Mitchell, Administrator, Secretary & Treasurer
Robert R. "Rob" Gilbert, III
Natalie Shirley

EXECUTIVE STAFF

Sanders Mitchell, Administrator, Secretary & Treasurer
Larry Williams, General Manager
Jason Stutzman, Environmental Affairs Director
Don Berger, Marketing Director
DeWayne Couch, Comptroller

www.maip.com

**30,000
SF Building
Now
Available**

PRSRT STD
U.S. Postage
PAID
Pryor Creek OK
Permit #220

CHANGE SERVICE REQUESTED