

MidAmerica

INDUSTRIAL PARK

Pryor Creek, Oklahoma

2007 Population:

20- Mile	100,124
30- Mile	319,521
40- Mile	895,628

Mileage:

<u>Destination</u>	<u>Miles</u>	<u>Kilometers</u>
Tulsa, OK	38	61
Kansas City, MO	245	390
Dallas, TX	267	430
St. Louis, MO	362	583
Memphis, TN	411	660
Houston, TX	520	800
Chicago, IL	667	1,070
Minneapolis, MN	679	1,090
Interstate 44 (North)	21	34
Interstate 40 (South)	57	92

Contact:

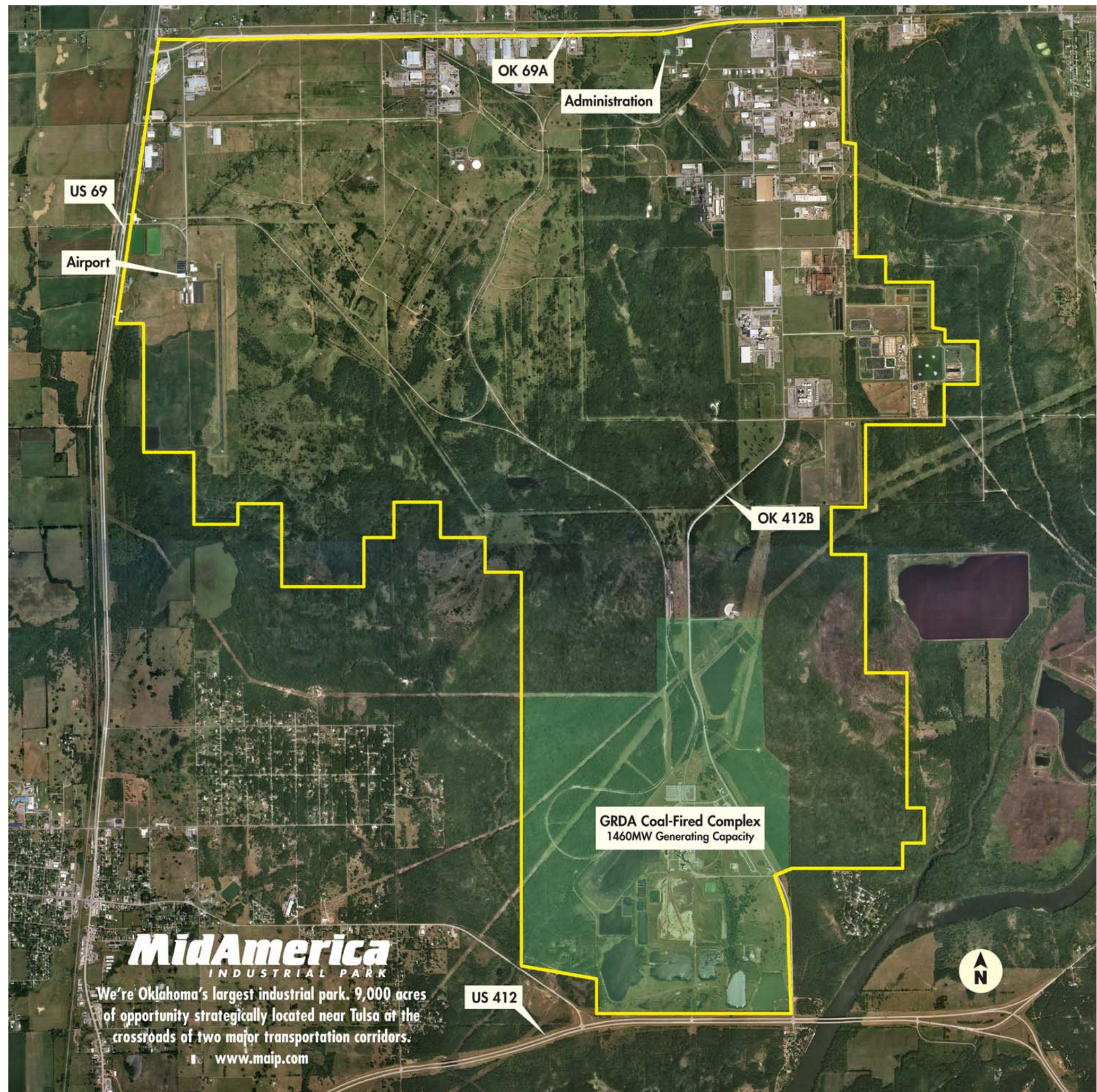
Don Berger (donb@maip.com)

Sanders Mitchell (smitchell@maip.com)

Tele. 918-825-3500

www.maip.com

Please print on 11x17



MidAmerica
INDUSTRIAL PARK

We're Oklahoma's largest industrial park. 9,000 acres of opportunity strategically located near Tulsa at the crossroads of two major transportation corridors.

www.maip.com