

M I D A M E R I C A 2 0 1 1 C A L E N D A R

LIMITED EDITION



MidAmerica Administrative Offices: Since 1992

Former Administration Building: 1961-1992



Celebrating History: Snapshots & Milestones from MidAmerica's First Fifty Years.

F I F T Y Y E A R S S T R O N G



U.S. Representative Ed Edmondson, behind his daughter June, Mrs. Edmondson and Mrs. Fred Harris, welcomes Lady Bird Johnson to the Tulsa International Airport on August 26, 1966. On the speaker's stand with the First Lady were U.S. Senator Mike Monroney and U.S. Senator Fred Harris.



Founded in 1961, MidAmerica is a 9,000-acre manufacturing, processing, and distribution center located in Pryor Creek, Oklahoma. Regarded as the largest industrial park in the state, MidAmerica has a 365-acre airport with a 5,000-foot runway, and its own water and wastewater treatment plants. More than 80 firms are located within the park including over a dozen Global and Fortune 500 companies.



Many notables have contributed guest columns to MidPoint, the MidAmerica newsletter. A few include: (L-R, top row) State Senator Sean Burrage, Cherokee Nation Speaker / Council Member Meredith Frailey, MidAmerica Trustee W.R. "Dick" Horkey, (middle row) State Representative Larry Rice, Chancellor of the Oklahoma State Regents for Higher Education Paul Risser, State Representative Ben Sherrer, (bottom row) Chief of the Cherokee Nation Chad Smith and State Senator Stratton Taylor.



After LBJ's visit to MidAmerica, a newsmen calls in his story from the only phone booth at the Pryor Airport. The police dog, who slept through the entire event, wouldn't be budged from the floor of the booth – not even by a Tulsa World reporter.



Karim Khan, Editor-in-Chief of Business Facilities magazine visited MidAmerica in 2005. Khan was introduced to the park through a series of briefings from Administrator Sanders Mitchell and tours of MidAmerica with Marketing Director Don Berger.



Barry Schnitt, Senior Manager, Global Communications & Public Affairs, Google and Jonna Kirschner, General Counsel, Oklahoma Department of Commerce.



The Local Workforce Development Council leadership: John Hawkins, Chairman of the LWDC (Co-Owner of Insurance Professionals, Inc.), Garry Harris, Vice-Chairman (Plant Manager, Lone Star Industries), and Lanny Slinger, Coordinator of the LWDC. The group is tasked with developing the area's workforce by enhancing employment and training opportunities.

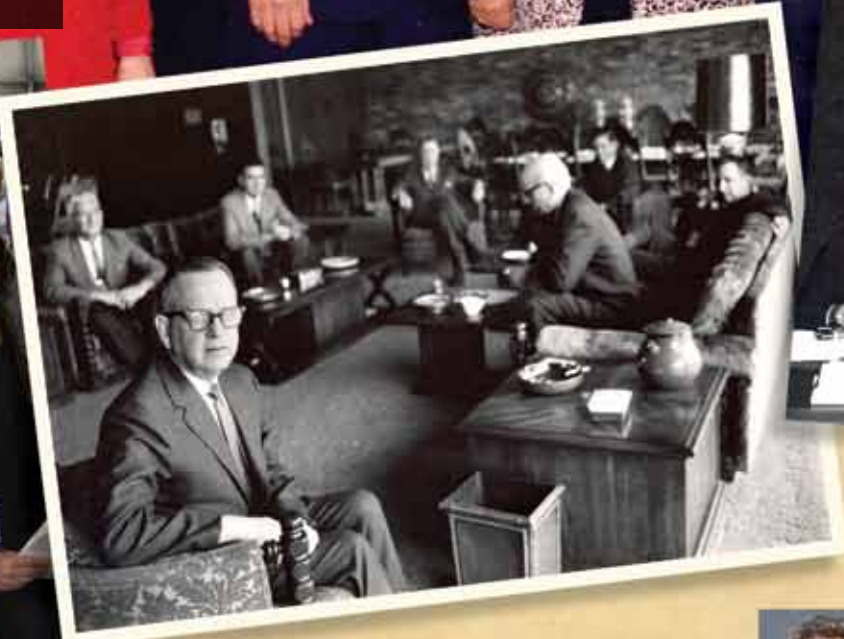
MIDAMERICA INDUSTRIES: IN APPRECIATION FOR YOUR CONTINUED SUPPORT

- 1946*
Grand River Dam Authority: Electric power
- 1954*
Georgia-Pacific (G-P Gypsum): Paper wallboard liner
NGC Industries: Gypsum wallboard liner
- 1959*
Central Carbide: Calcium carbide
- 1960**
MidAmerica Board of Trustees: Park Administrator
- 1962
Buzzi Unicem (Lone Star Industries): Construction, oil well & masonry cement
- 1966
PerformancePipe (Chevron/ConocoPhillips): Extruded plastic pipe
- 1967
Pryor Plant Chemical (formerly Wil-Gro): Ammonium nitrate fertilizer
- 1971
Fabricut: Bedspreads, draperies
American Castings (ACIPCO): Ductile iron foundry
RAE Corporation: Air conditioning & refrigeration equipment
- 1972
AIRGAS (Jimmie Jones): Industrial supplies
- 1973
Interplastic: Commercial liquid resins
Red Devil: Sealant, spackling, utility knives & scrapers
- 1974
Solae Company (E.I. duPont/Bunge): Isolated soy protein
Orchids Paper Products Co. OK Mill: Tissue paper manufacturer
- 1975
KAMAN (Allied Bearings Supply): Bearings distributor
- 1976
Air Products of Oklahoma: Oxygen, nitrogen, argon
HEM, Inc. (HEMSaw): Metal cutting band saws
- 1977
Norit Americas: Activated carbon
Williams Construction: General contractor, equipment installation
- 1978
Orchids Paper Products Co. OK Converting: Napkins, towels, facial & bath tissue
GRDA Coal-Fired Generating Plant: Electric power
J&W Mechanical & Industrial Supply: Industrial supplies
Electrical Services: Contractor
- 1979
A. P. Green Industries: Ceramic fiber
- 1982
E-Z Mart: Truck Stop
- 1987
Mid-South Maintenance: General contractor, industrial maintenance
- 1990
Buckley Powder: Blasting services
G.A.P. Roofing: Organic saturated roofing felt
Berry Plastics: Polyethylene film & plastic bags
Bennett Steel: Crane rental/steel erection service
- 1991
Q.M.I.: Precision/production machining
- 1992
Evans Enterprises: Motor sales & service
- 1995
ISCO Industries: Extruded pipe wholesale distributor
NORDAM: Aircraft engine testing facility
Northeast Technology Centers: Superintendent's office & industry training
- 1997
L&M Fabrication: Metal fabrication
Mid-American Grille: Restaurant
Mid-America Insulation: Full-service insulation
Mid-America Machining: Machine shop
OSU Institute of Technology: Post-secondary vocational training
Cadet Manufacturing: Truck bodies
- 1998
Endot Industries: HDPE pipe for water & gas
Berry Plastics: Polyethylene stretch film
- 1999
Marmic Fire & Safety: Fire & safety supplies / training
FASTENAL: Industrial supplies
SYGMA: Restaurant food/supplies
- 2000
Rick Ogden Concrete Construction: Contractor
Associated Electric Cooperative, Inc. (AECI/Siemens): Natural gas power plant
- 2001
L & S Hauling: Waste & clean-up hauling
Days Inn & Suites: Motel
H&E Transport: General trucking
- 2002
Brent Electric: Electrical contractor
Comfort Inn & Suites: Motel
Gulf Intermodal Cartage: Contract cartage containers
Mid-America Rental Center: Full service rental
DB Schenker Logistics: Contract warehousing
- 2003
MESTA: Mayes County emergency ambulance service
Oklahoma One Call System: Utility line protection center
- 2004
Hamill Trucking: Trucking-general commodities
Mia's Italian Grill & Steakhouse: Restaurant
Robbins Trucking: Contract trucking
- 2005
Power Soak: Commercial dishwashing systems
TRB Steel: Metal fabrication
OSU Institute of Technology / MidAmerica Enterprise Center: Business incubator
- 2006
Worldwide Steel Works: Metal fabrication
DTS Communications: Wi-Fi network equipment / RFID & locationing
- 2007
Google: Data center
TowerWorx: Metal fabricators of towers
Benco Dental: Distributor of dental supplies & equipment
Digi Surveillance Systems: Custom surveillance
- 2008
Integrity Machining: Machine shop
CBI Electric: Electrical supplies
PeopleLink Staffing: Staffing services
Tulsa Life Flight: Helicopter ambulance service
- 2009
Urgent Care of Green Country: Occupational & primary care clinic
Transwood: Transportation carrier
Holiday Inn Express: Lodging
S&D Electric Motor Repair: Electric motor repair
Mid-America Electric: Electrical contractor
- 2010
EASTOK Pipeline: Natural gas gathering & processing
IBT, Inc.: Industrial supplies
C.A.R.D.: Daycare facility
Denny's: Restaurant
Ashley's Electrical Supply Services: Electrical contractor

*Already on-site – prior to founding of MidAmerica Industrial Park
**First members of MidAmerica board selected December 14-27, 1960

M I D A M E R I C A

Special friends that attended the October 1992 dedication of the new MidAmerica Administration building included (L-R) State Senator Gene Stipe, Pryor Mayor Lucy Belle Schultz; (first step) U.S. Representative Mike Synar, State Senator Stratton Taylor, MidAmerica Trustee W.R. "Dick" Horkey, Jamsie Redden, MidAmerica Administrator Sanders Mitchell, State Senator Charles Ford; (second step) State Senator Kevin Easley, Lt. Governor Jack Mildren, Atochem Plant Manager Peter Yacoe, Pryor Chamber Manager Dutch Longenbaugh; (third step) State Representative George Vaughn.



MidAmerica Board Members at the founding of the park in 1961: (seated, L-R) Burke Webb, Chairman Russell F. Hunt, and Max Genet, Jr.; (standing) MidAmerica Administrator Gene R. Redden and Counselor R. Dobie Langenkamp. Missing: Tony Jack Lyons.

MidAmerica Administrator Gene R. Redden (lower left), also known as "Gene R" to friends, had a vision of what MidAmerica would become...

Left: Ever the fashion statement, even at an advancing age of 83 years young, Tony Jack Lyons was one of MidAmerica's original board – seen here listening to local Judge Gary Dean at a groundbreaking in 2007.



MidAmerica Board Members as of January 1, 2011: (L-R at top) David J. Chernicky, Robert R. "Rob" Gilbert, III and R. Dobie Langenkamp; (L-R at bottom) MidAmerica Administrator Sanders Mitchell and Natalie Shirley.

Celebrating History: Snapshots & Milestones from MidAmerica's First Fifty Years.



Groundbreakings have always been popular events for the board and special dignitaries.



JANUARY



Crowds sat through the 10th Anniversary festivities including speeches from area notables.



U.S. Representative Ed Edmondson addresses a MidAmerica board meeting with Governor David Hall at the end of the conference table.

Sunday	Monday	Tuesday	Wednesday	Thursday	Friday	Saturday
						1 New Year's Day
2	3	4 AECI / Kamo Power deed transfer 1999	5	6	7	8
9	10	11	12	13	14	15
16	17 Martin Luther King	18	19	20	21	22
23	24	25	26 E-Z Mart deed transfer 1982	27	28	29
30	31					



Mid-America Industrial Park



Atchem Plant Manager Peter Yacoe, MidAmerica Trustee W.R. "Dick" Horkey, MidAmerica Administrator Sanders Mitchell, Lt. Governor Jack Mildren and MidAmerica Trustee John R. Robertson.

MidAmerica Board Members In Chronological Order

- Burke Webb 1960-1977
- Russell F. Hunt 1960-1981
- Tony Jack Lyons 1960-1963
- Gene R. Redden* 1960-1990
- Max Genet, Jr. 1960-1962
- Lloyd K. Allen 1963-1965
- John Williams 1964-1966
- Robert Breeden 1965-1971

- John F. Hughes 1966-1966
- Philip Viles 1966-1971
- Jack Zarrow 1971-1973
- John Devine 1971-1972
- Arthur D. Lindberg 1972-1973
- Ben Langdon 1973-1975
- Scott Eubanks 1975-1978
- W. Carlisle Mabrey III 1975-1980
- William P. Willis, Jr. 1977-1992
- Jack Dreessen 1978-1979
- Jay C. Casey 1979-1984

- J. Milton Patrick 1981-1989
- John R. Robertson 1981-1998
- Stephen P. Matthews 1984-1986
- Dr. Francis Tuttle 1986-1987
- Don Paulsen 1987-1991
- W. R. "Dick" Horkey 1989-2003
- James Sanders Mitchell* 1990-
- Greg Main 1991-1994
- Robert R. Gilbert III 1992-
- Leo Presley 1995-1997
- Howard G. Barnett, Jr. 1998-1999

- R. Dobie Langenkamp 1998-
- Ronald E. Bussert 1999-2003
- Kathryn L. Taylor 2003-2006
- David James Chernicky 2003-
- Amy Polonchek 2006-2007
- Natalie Shirley 2007-

*MidAmerica Administrator

H E M S A W



HEMSAW was founded in California and moved to Oklahoma as a way of cutting manufacturing costs to remain competitive. Many of the original California workforce relocated to MidAmerica in 1976.



The ever-increasing HEMSAW manufacturing campus as seen from the air in 2008.



The company manufactures numerous metal cutting band saws for a host of industrial applications.

Celebrating History: Snapshots & Milestones from MidAmerica's First Fifty Years.



Joe Purtle started as a welder at HEMSAW. Now 35 years later, he's their Director of Engineering responsible for product research and development as well as coordinating the activities for a staff of eleven.

FEBRUARY



Company Founder Jerry Harris and one of the HEMSAW units.

Sunday	Monday	Tuesday	Wednesday	Thursday	Friday	Saturday
		1	2	3	4 G.A.P. Roofing deed transfer 1992	5
6 Super Bowl	7	8	9	10	11	12
13	14 Valentine's Day	15	16	17	18	19
20	21	22 Washington's Birthday	23	24	25 Northeast Technology Centers deed transfer 1992	26
27	28					



A HEMSAW employee tests a new band saw to assure the machine meets this customer promise: The saw that cuts straight.

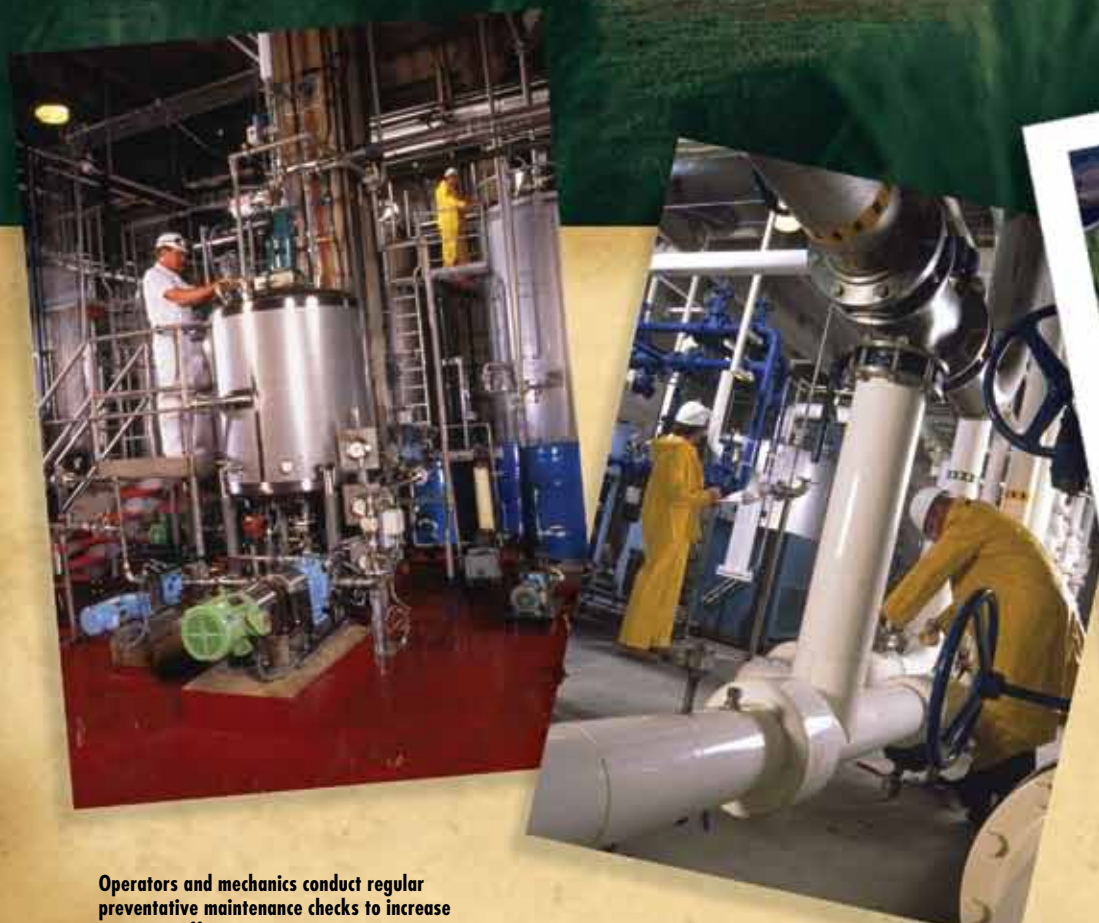
Today, HEMSAW has evolved into a 140+ person firm that competes globally. For over 40 years, the firm has been the leader in new band saw technology setting the standard with more patented innovations than any other band saw manufacturer in the world. A leading trade publication

ranked HEMSAW "First in Sawing" recently among the Top 10 equipment brands. From market research, the company has ranked historically in the Top 5 of all manufacturers of all equipment brands.



S O L A E

The Solae plant opened at MidAmerica in 1976 due to "abundant water, competitive energy rates, low delivery costs and a skilled workforce as well as the central location." Solae's nearly 170 employees manufacture soy protein isolate, a powdery concentrate that is added to common health foods.



Operators and mechanics conduct regular preventative maintenance checks to increase operating efficiency.

The Solae Company, a global innovator in technology development, research and application of soy protein, ships about half of the products processed at the MidAmerica plant internationally.

Celebrating History: Snapshots & Milestones from MidAmerica's First Fifty Years.

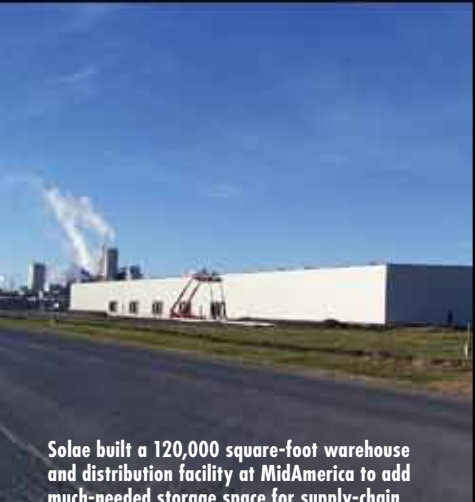


Red iron forms the support frames for the new Solae warehouse and distribution facility.

MARCH



An operator monitors process conditions to ensure quality standards are always maintained.



Solae built a 120,000 square-foot warehouse and distribution facility at MidAmerica to add much-needed storage space for supply-chain efficiency.

Sunday	Monday	Tuesday	Wednesday	Thursday	Friday	Saturday
		1	2	3	4	5 Q.M.I. lease 1993
6 Solae Company (E.I. DuPont/ Bunge) groundbreaking 1975	7	8 Mardi Gras	9 Ash Wednesday	10	11	12
13	14	15	16	17 Saint Patrick's Day	18	19
20	21	22	23	24	25	26
27	28	29 Hamill Trucking (Rocket Freight) deed transfer 1968	30 Interplastic lease 1973	31		

Solae soybean ingredients have been used in more than 80 percent of all clinical research on soy protein at more than 180 leading universities and academic institutions in 400 studies.

Because Solae manufactures complete proteins, the company competes with meats, eggs and milk products at a very competitive dollar-per pound cost. The company provides soy products with economic, functional, nutritional, and health benefits for many food market segments.



Operators review the equipment set-up prior to each production campaign.

